

Supplementary Material for Albertoni, Fabiano F., and Marcelo Duarte — Immature stages of *Adeloneivaia fallax* (Lepidoptera: Saturniidae). Florida Entomologist 98(1) (March 2015) at <http://purl.fcla.edu/fcla/entomologist/browse>.

Fabiano F. Albertoni<sup>1,2</sup> and Marcelo Duarte<sup>1\*</sup>

<sup>1</sup> Programa de Pós-Graduação em Sistemática, Taxonomia Animal e Biodiversidade. Museu de Zoologia da Universidade de São Paulo. Avenida Nazaré, 481, Ipiranga, 04218–970 São Paulo SP, Brazil

Email: [fabianoalbertoni@gmail.com](mailto:fabianoalbertoni@gmail.com); [mduarte@usp.br](mailto:mduarte@usp.br)

### ABSTRACT

Details of the egg, larval, and pupal morphology of *Adeloneivaia fallax* (Boisduval) (Lepidoptera: Saturniidae) are described and illustrated and compared with other species of Saturniidae, more specifically with other Ceratocampinae. Egg ultrastructure is described for the first time in Ceratocampinae; larval chaetotaxy is documented for the first time in *Adeloneivaia*; and few pupal characters are evaluated for their potential phylogenetic use. Biological and behavioral aspects of captive rearing are discussed, and larval host plant records for *A. fallax* are provided.

Key Words: Atlantic Forest, Ceratocampinae, larva, morphology, neotropical

### RESUMEN

Son descritos e ilustrados detalles de la morfología de huevo, larva e pupa de *Adeloneivaia fallax* (Boisduval) (Lepidoptera, Saturniidae) y comparados con otras especies de Saturniidae, más específicamente con otros Ceratocampinae. Por primera vez se documenta la chaetotaxia larval en *Adeloneivaia*. Son proporcionados aspectos biológicos e comportamentales de la cría en cautiverio, así como registros de las plantas hospederas de *A. fallax*.

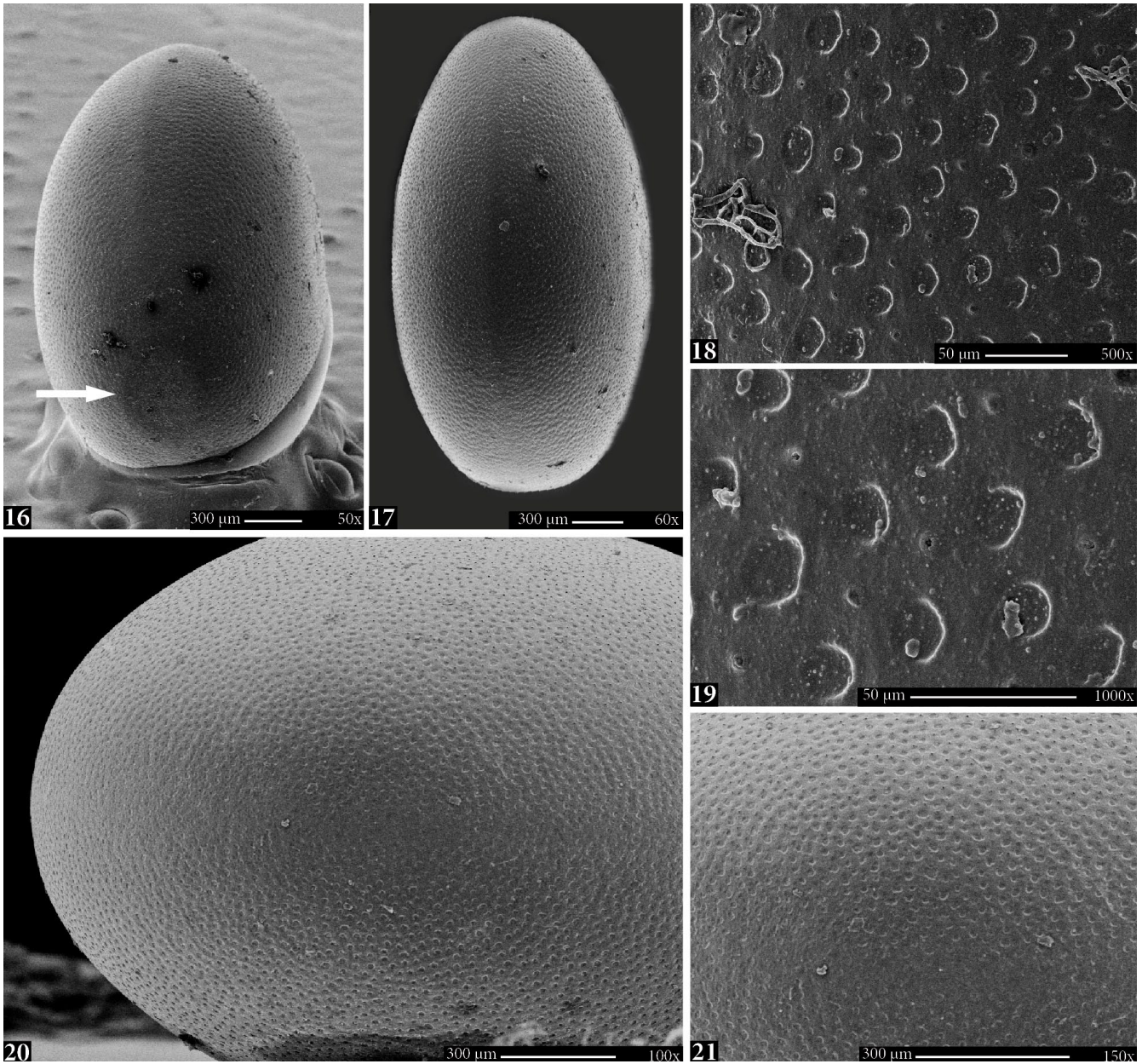
Palabras Clave: Mata atlántica, Ceratocampinae, larva, morfología, neotropical



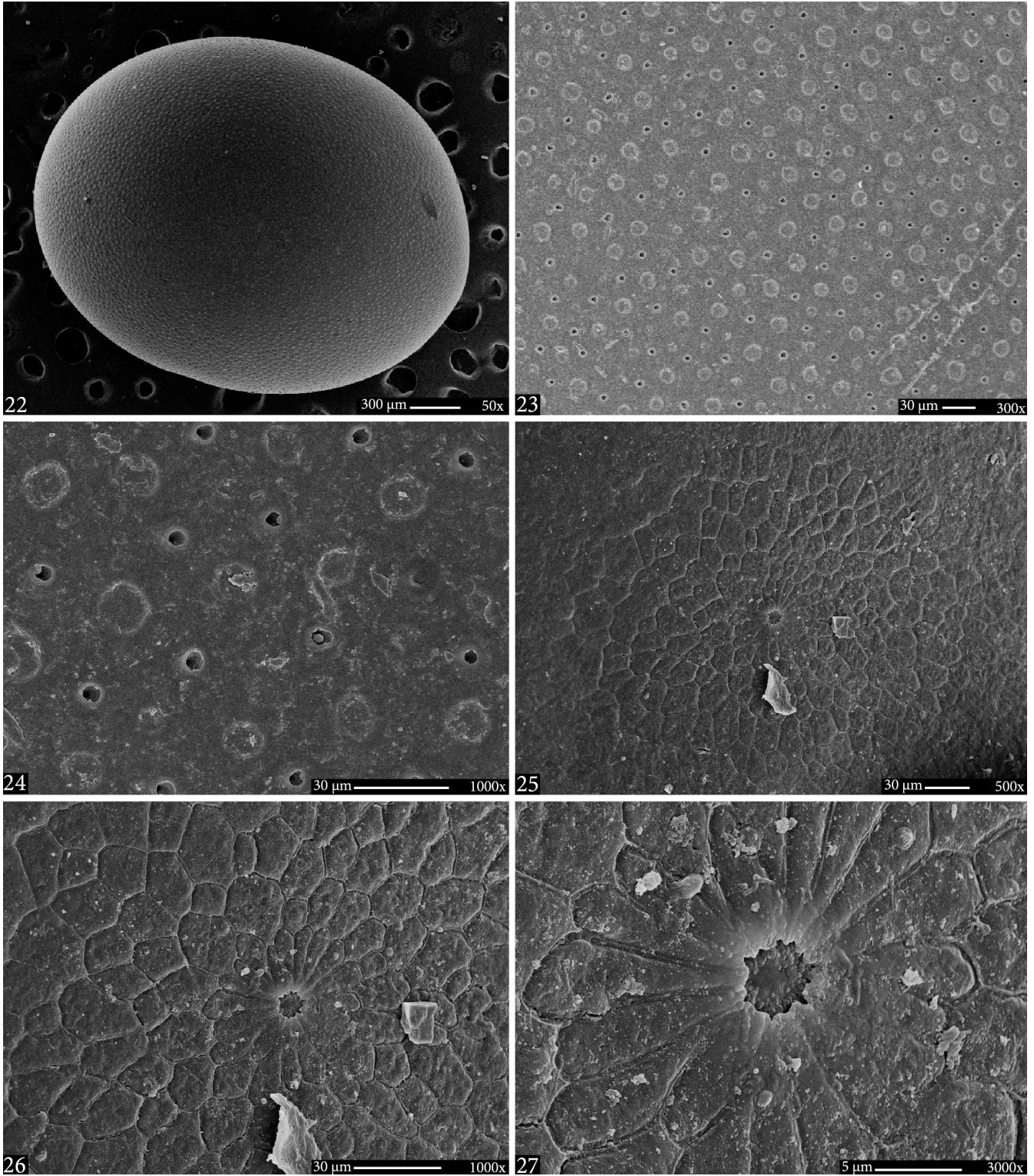
**Suppl. Figs. 1–4.** *Adeloneivaia fallax*, adult. **1** and **2.** Male, dorsal and ventral views, respectively. **3** and **4.** Female, idem.



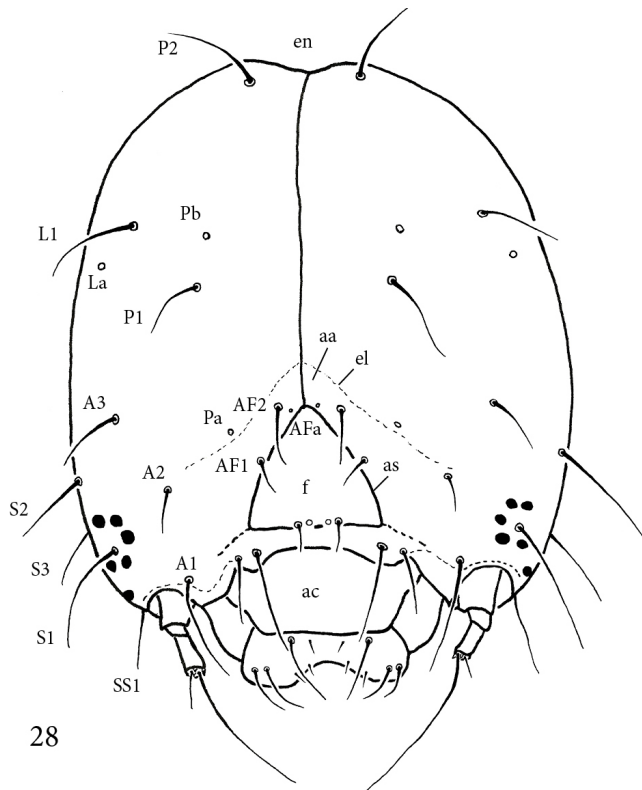
**Suppl. Figs. 5–15.** *Adeloneivaia fallax*, life cycle. **5** and **6.** Egg batch. **7.** Egg with embryo visible. **8.** First instar. **9.** Molting to second instar. **10.** Second instar. **11.** Third instar. **12.** Fourth instar. **13.** Fourth instar feeding (see also text). **14.** Fifth instar. **15.** Sixth instar.



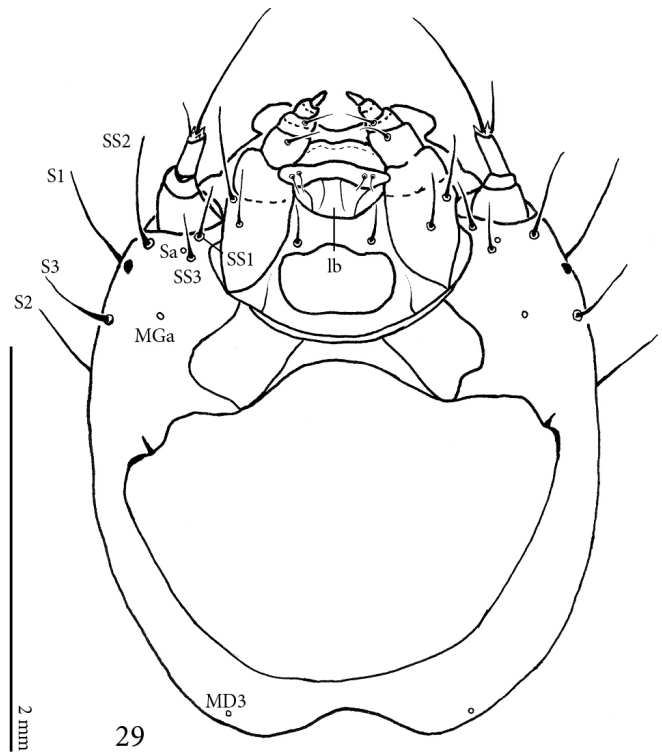
**Suppl. Figs. 16–21.** *Adeloneivaia fallax*, egg ultrastructure. **16.** Frontal view with micropyle (arrow). **17.** Lateral view (dorsal part of larva). **18** and **19.** Details of chorion at 500 and 1000x, respectively. **20.** Lateral view. **21.** Lateral view, detail at 150x.



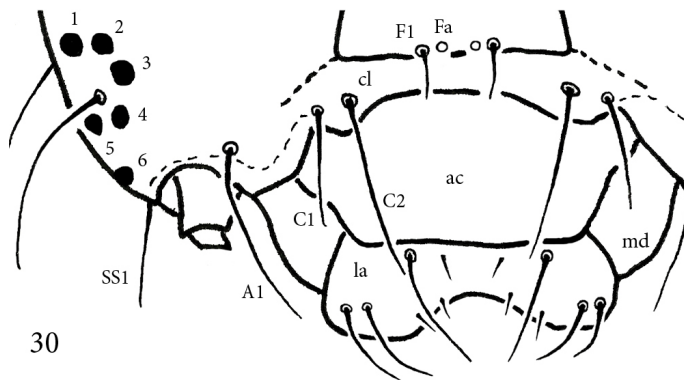
**Suppl. Figs. 22–27.** *Adeloneivaia fallax*, egg ultrastructure. **22.** Lateral view. **23** and **24.** Details of chorion at 300 and 1000x, respectively. **25–27.** Details of micropyle at 500, 1000, and 3000x, respectively.



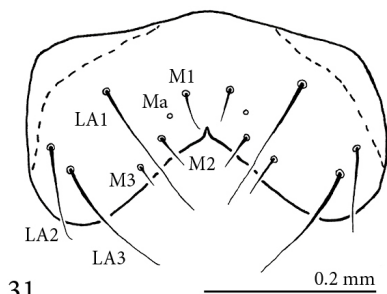
28



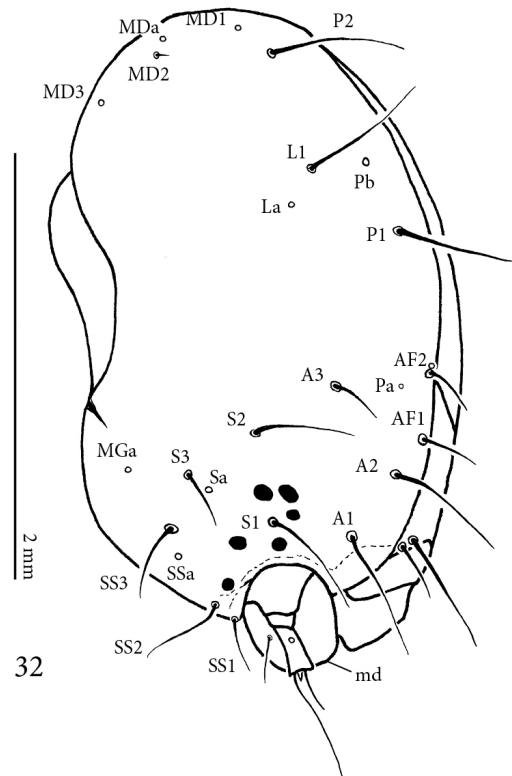
29



30

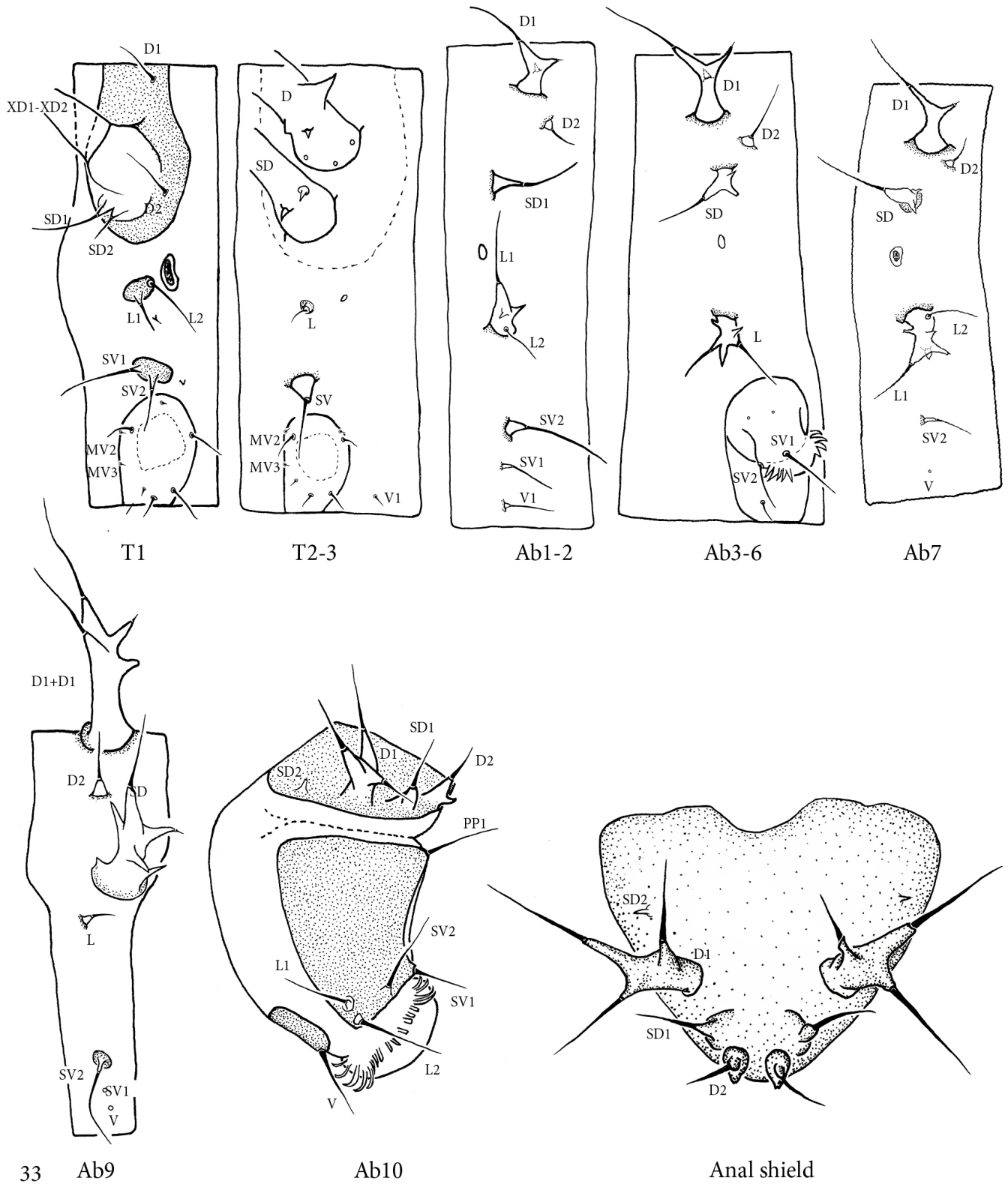


31

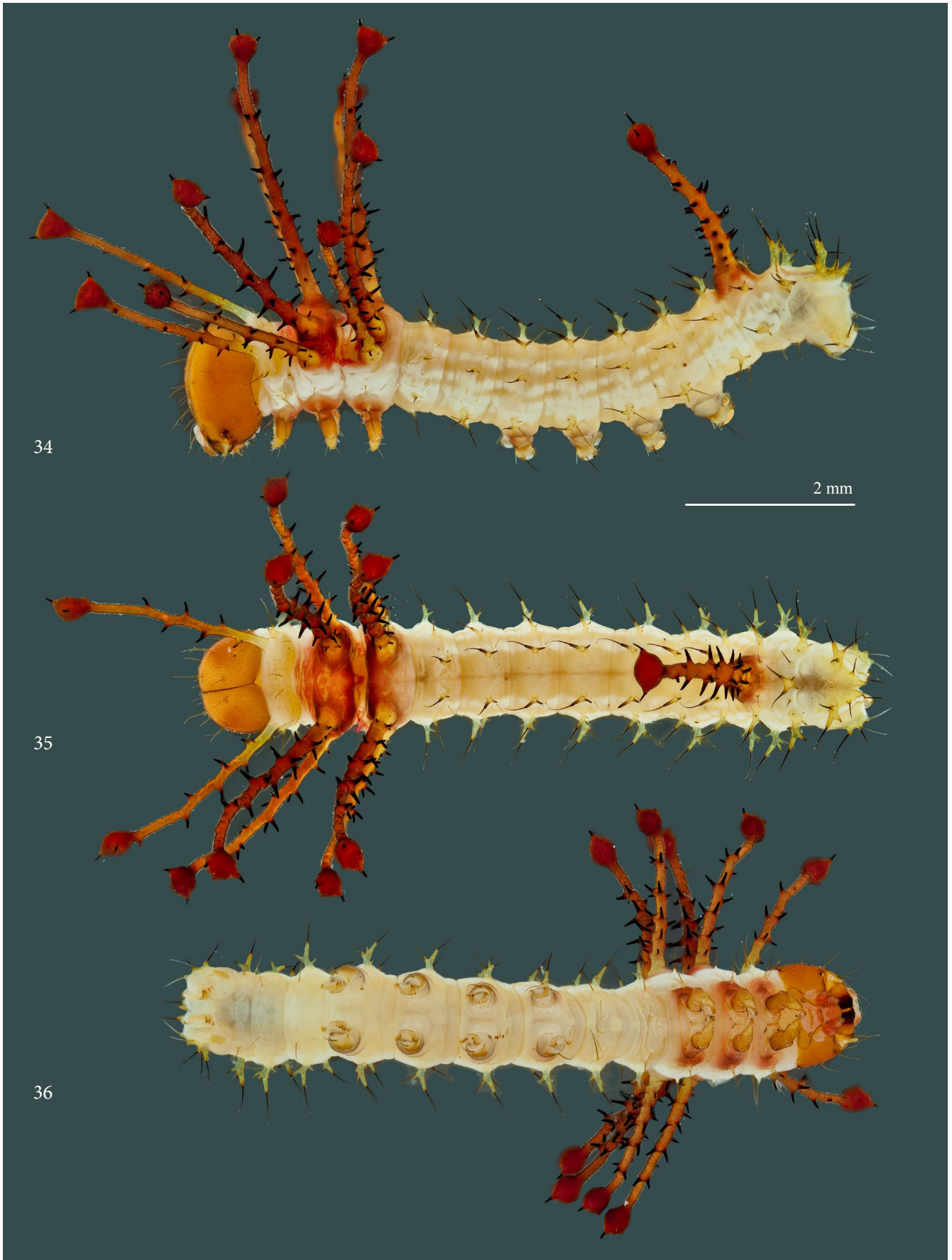


32

**Suppl. Figs. 28–32.** *Adeloneivaia fallax*, chaetotaxy of first instar, head and mouthparts. **28.** Head, anterior view. **29.** Idem, ventral view. **30.** Inferior portion of the head, anterior view. **31.** Labrum, anterior view. **32.** Head, ateral view. Abbreviations (for chaetotaxy see text): ac, anteclypeus; aa, adfrontal area; as, adfrontal suture; cl, clypeus; en, epicranial notch; el, ecdysial line; f, frons; la, labrum; md, mandible.

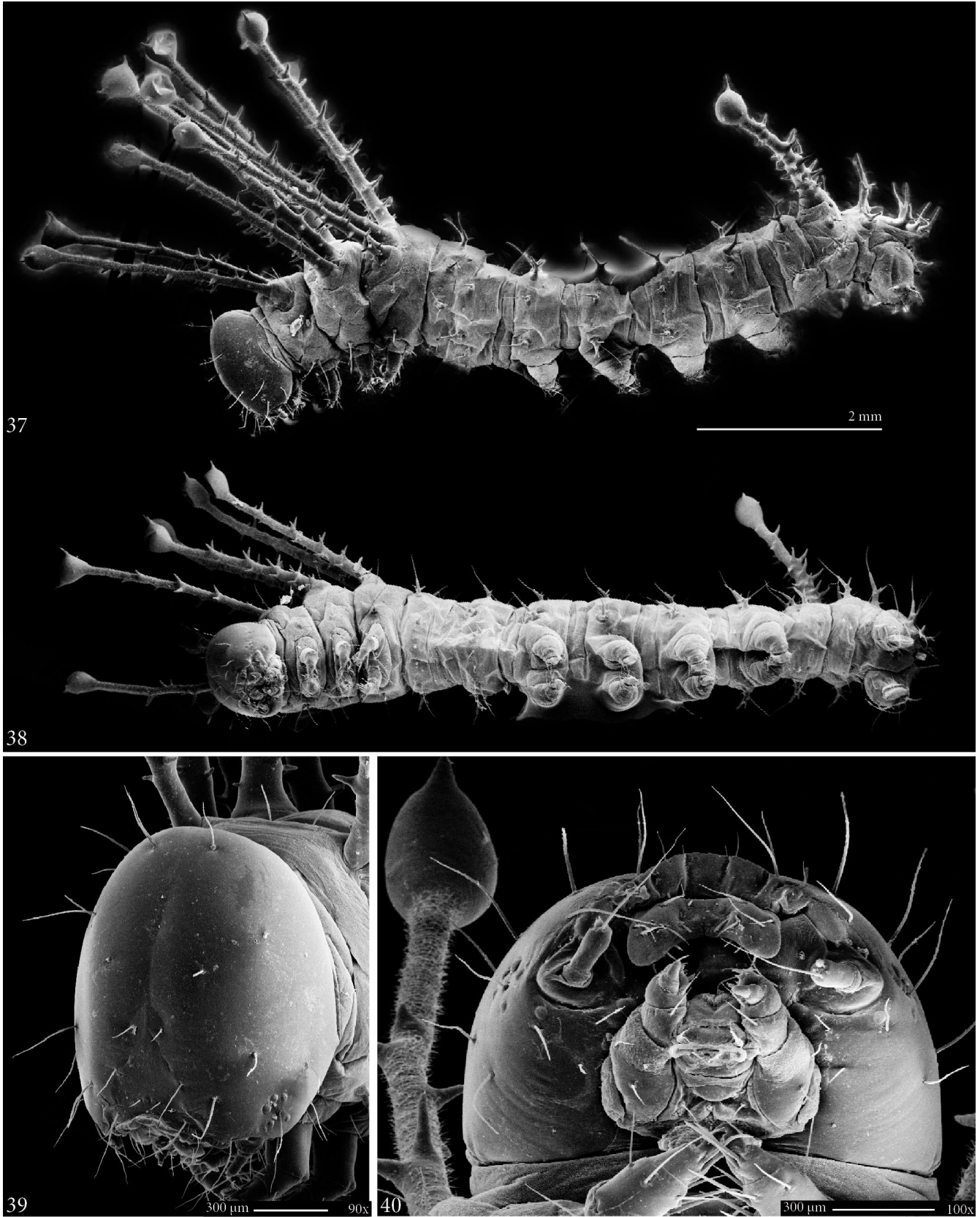


**Suppl. Fig. 33.** *Adeloneivaia fallax*, first instar, body chaetotaxy. Thoracic (T1–T3) and abdominal segments (Ab1–Ab10) in lateral view.

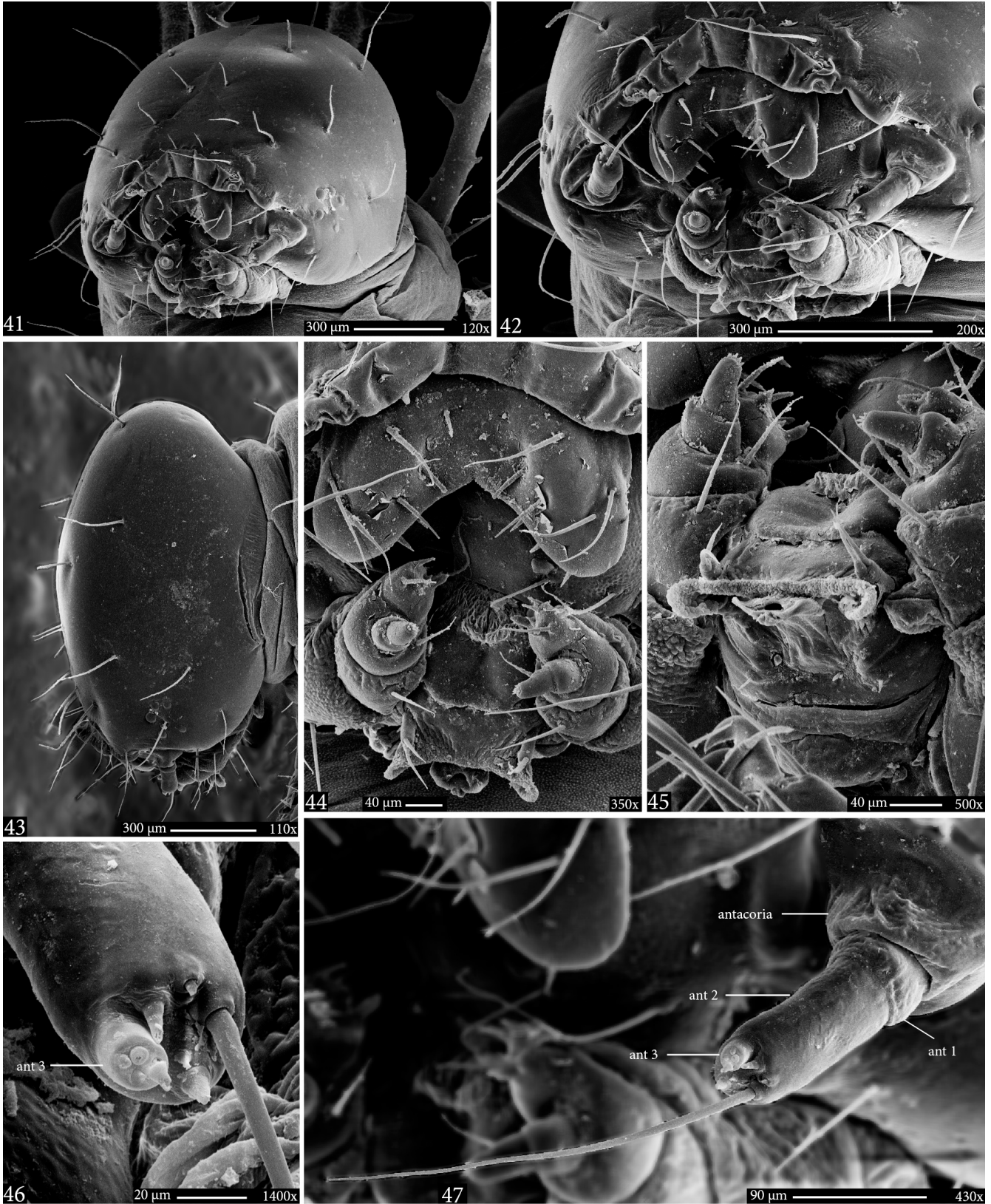


Suppl. Figs. 34–36. *Adeloneivaia fallax*, first instar. 34. Lateral view. 35. Dorsal view. 36. Ventral view.

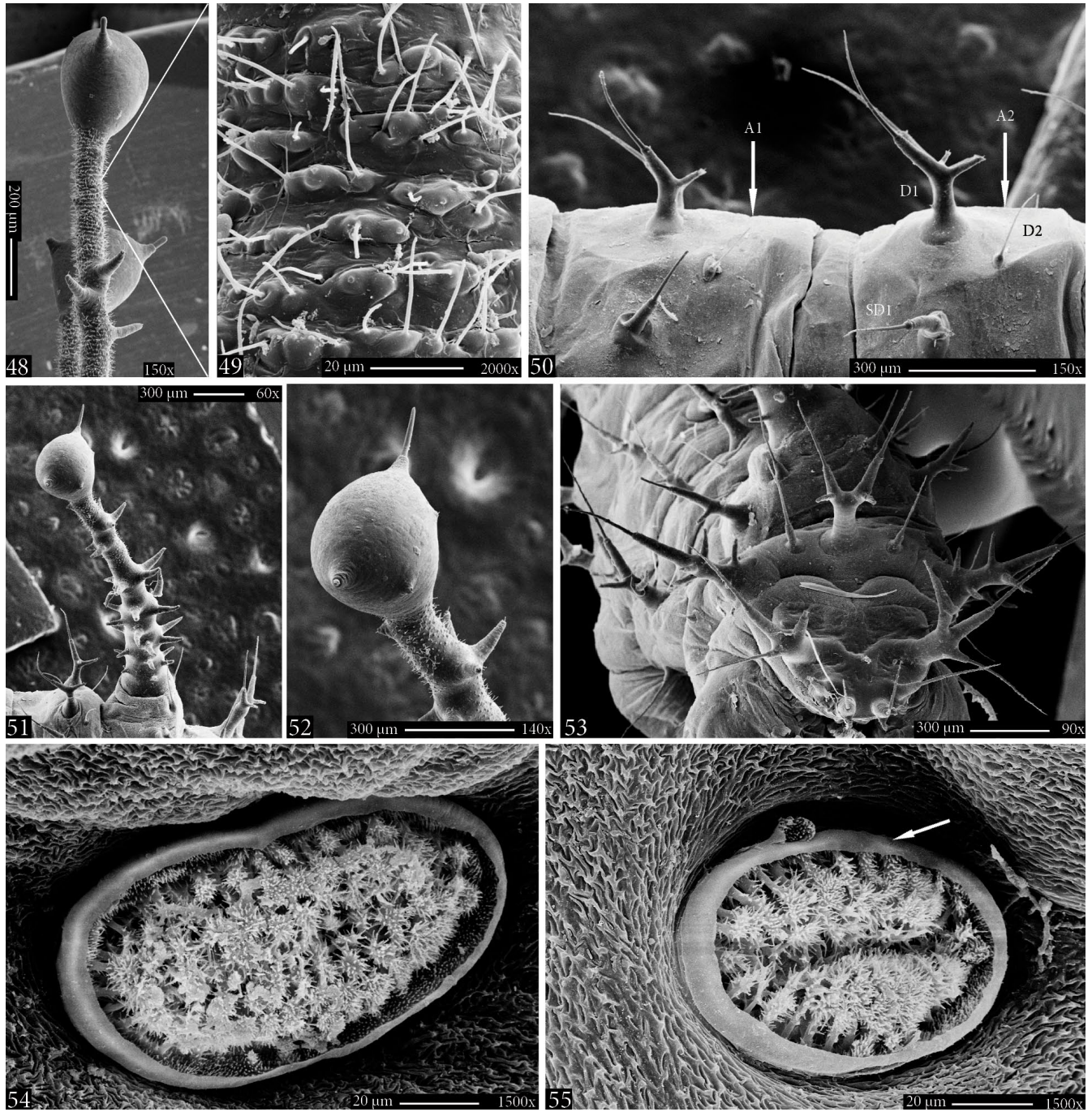




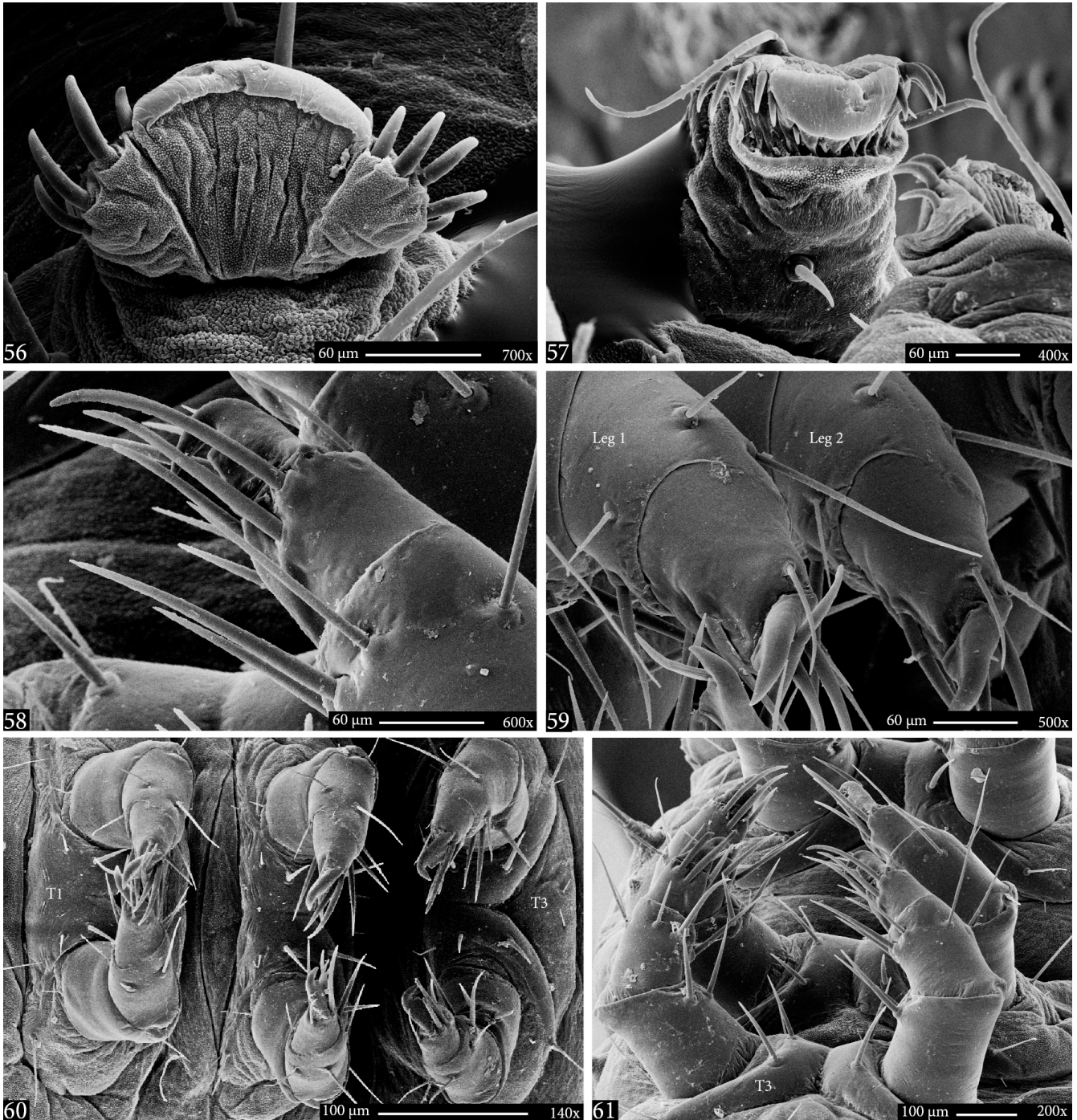
Suppl. Figs. 37–40. *Adeloneivaia fallax*, SEM of first instar. 37. Lateral view. 38. Latero-ventral view. 39. Head, antero-lateral view. 40. Idem, ventral view.



**Suppl. Figs. 41–47.** *Adeloneivaia fallax*, SEM of first instar. **41.** Head, antero-lateral and ventral views. **42.** Idem, antero-ventral view at higher magnification. **43.** Idem, lateral view. **44.** Labrum, hypopharynx and maxillary palpi, antero-ventral view. **45.** Spinneret, labium and maxillary palpi. **46.** Apex of left antenna. **47.** Left antenna. Abbreviation: ant, antennomere.



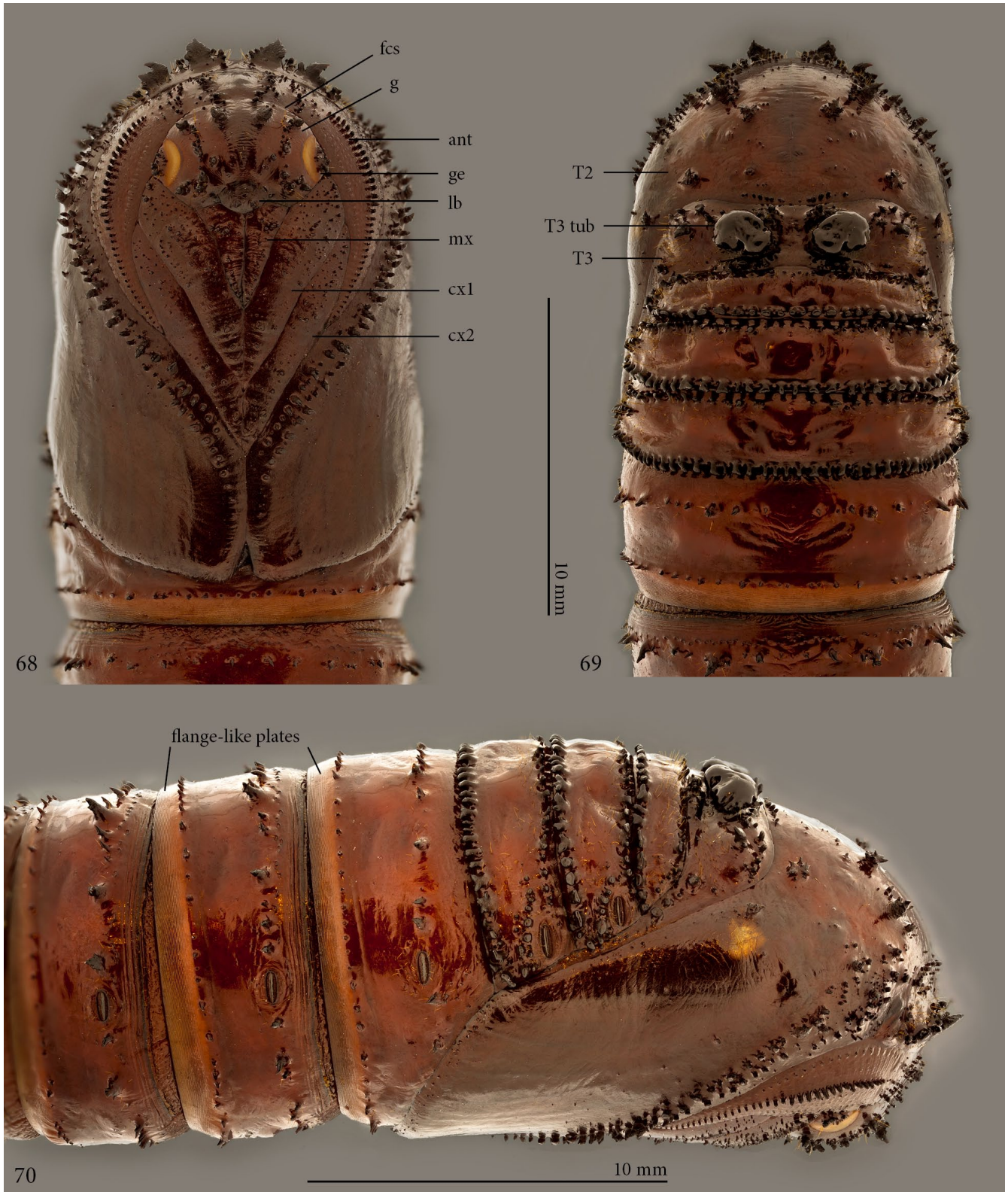
**Suppl. Figs. 48–55.** *Adeloneivaia fallax*, SEM of first instar. **48.** Scolus of metathorax. **49.** Tegument of metathoracic scolus. **50.** Segments A1 and A2, dorso-lateral view (see text for chaetotaxy). **51.** Scolus of segment A8. **52.** Scolus of A8, detail of the apex. **53.** Anal shield. **54.** Prothoracic spiracle. **55.** Spiracle of segment A8.



**Suppl. Figs. 56–61.** *Adeloneivaia fallax*, SEM of first instar. **56–57.** Right proleg of segment A3, dorsal and ventral views, respectively. **58.** Apex of left metathoracic leg, posterior view. **59.** Apex of prothoracic and mesothoracic legs, anterior view. **60.** Legs, ventral view. **61.** Metathoracic legs, posterior view.



**Suppl. Figs. 62–67.** *Adeloneivaia fallax*, female pupa. **62–64.** Lateral, ventral and dorsal views, respectively. **65** and **66.** Terminal abdominal segments, ventral and posterior views, respectively. **67.** Head and prothorax, anterior view, detail with arrow indicating prothoracic spiracle. Abbreviations: A, abdominal segment; T, thoracic segment; go, gonopore opening.



**Suppl. Figs. 68–70.** *Adeloneivaia fallax*, female pupa. **68–70.** Head, thorax and part of abdomen, ventral, dorsal and lateral views, respectively. Abbreviations: ant, antenna; cx1, coxa of prothoracic leg; cx2, coxa of mesothoracic leg; fcs, frontoclypeal suture; g, gena; ge, glazed eye-piece; mx, maxilla; T2, mesothorax; T3, metathorax; T3 tub, metathoracic tubercle.